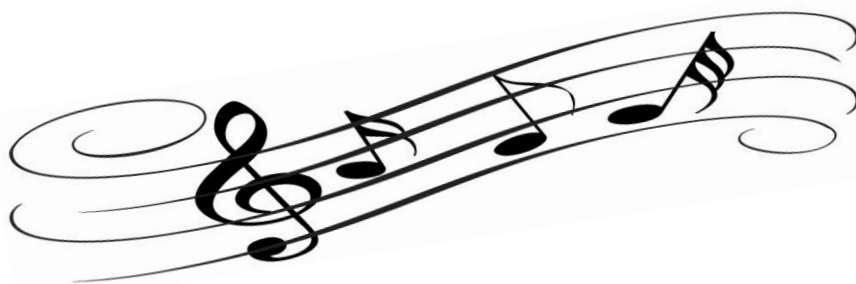


January 2019



Lafleche & District Music Festival 2018/19 Annual Newsletter

It's Music Festival season once again! Our dates for the 2019 festival are Sunday, April 7 to Friday, April 12, 2019. Please note that the entire festival, including the final concert, will be held at the Lafleche United Church. The Church has been reserved for practice from April 1 through April 6. This year, Voice and Speech Arts will be April 7, 8 & 9. Piano will be April 10, 11 & 12. The Adrian Frank Competition will take place Friday, April 12, 2019 at 7:00pm and the Final Concert will be held Sunday, April 14, 2019 at 2:00pm.

We are so excited announce that the Lafleche & District Music Festival has teamed with Solaris Live to provide **ONLINE ENTRY** this year. It is easy to use and you can now pay by credit card! The online registration web site is: <https://events.solarislive.com/Lafleche-District-Music-Festival>

We have included an instruction sheet with the newsletter to try help with the transition. If you have any questions, please email Jacqueline Poirier at jmpoirier@sasktel.net **prior** to Festival.

Reminder... Competitors **12 & under** need only compete in a total of two (2) solo voice or musical theatre classes, *regardless of discipline*, to qualify for voice or musical theatre awards and scholarships. However, they must compete in two (2) piano solos to qualify for piano scholarships. Our musical theatre and voice scholarships are now separated.

Competitors **13 & over** must continue to compete in two (2) solo classes in the same discipline (ex 2 piano, 2 voice, 2 musical theatre) to qualify for the corresponding awards and scholarships.

Competitors of all ages must only compete in one (1) solo speech arts class to qualify for scholarships.

As in the past, duets, small ensembles, family ensembles, choral groups or choir performances do not qualify as an individual (solo) entry. These groups, however, can qualify for the corresponding awards and scholarships with one entry.

Entry fees are \$10 per solo or duet piece and \$15 per choir/ensemble (3+ performers) piece. *Please note that no refund of entry fees can be given after the entry deadline.* Our entry deadline for piano, voice and speech arts is **February 15, 2019**, and all entries must be made by this date. To enter, please visit <https://events.solarislive.com/Lafleche-District-Music-Festival>

Competitors must be available for each date of the festival. Please keep scheduling requests to a minimum. All special requests will be considered.

As in the past years, for the **Adrian Frank Competition**, a maximum of eight performers will be chosen by the adjudicators: one speech arts performance, two musical theatre performances, two voice performances and three piano performances. The winner will be awarded \$150.⁰⁰. Each performer will receive \$50.⁰⁰.

All awards and scholarships are the adjudicators' decisions. The adjudicators are also responsible for the selection of performers in our final concert and for our new Adrian Frank Competition.

The Lafleche & District Music Festival Committee is dedicated to the students we serve. In an effort to "give back to the students" and to invest in their future, we wish to contribute toward their music education. We are willing to assist with the cost of music camps, workshops and other musical education endeavors. Students are encouraged to apply to the committee with the **Music Camp Sponsorship application form** by September 30, 2019, to be considered at our meeting in November. The forms are available by contacting the LDMF Committee by email at laflechemusicalfestival@gmail.com.

Note to Teachers and Schools: Remind your students that competition in **Speech Arts** is always an option. It is a great way to instill confidence in children who may not wish to compete musically. We have several new scholarships devoted to speech arts to help encourage and support students in this area. You only have to be entered in one Speech Arts Class to be eligible for a scholarship.

All program and entry inquiries should be directed to Jacqueline Poirier. Any other questions concerning the LDMF can be directed to our president, Sharla Girardin.

We look forward to another educational and entertaining festival and we wish all participants the best of luck!!

Melinda Massé
Corresponding Secretary

Music for Life!

Lafleche & District Musical Festival Board of Directors

Sharla Davidson-Girardin ● President	Jacqueline Poirier ● Entry Secretary	Melinda Massé ● Corresponding Secretary
Karrie Gross ● Vice President	Bren Keenan ● Treasurer	Bev Poirier ● Trophies/Awards
David Sproule ● Past President	Cheryl Crooks ● Scholarship Convener	Courtney Pinsonneault ● Work Convener
John deGraauw ● Facilities Convener	Darcy McLeod ● Selection Organizer	

Area Representatives...

Karla Silbernagel (Mankota)	Courtney Pinsonneault (Lafleche/Woodrow)	Bev Poirier (Fir Mountain)
Sonia Falconer (Glentworth/McCord)	Charla Achter (Kincaid)	